

Instructions

Backflow Test Site Tube

SamsonRiser™

If any parts are missing or damaged, or if you have any questions, please reach out to us at: contactus@samsonriser.com

Keep this manual for future reference.

Warning

Read these instructions before use. A licensed tradesperson recognized by the local authorities is required for the installation, testing, and maintenance of backflow prevention assemblies. The tester is responsible for determining the test procedure accepted by the local authorities.

Specifications

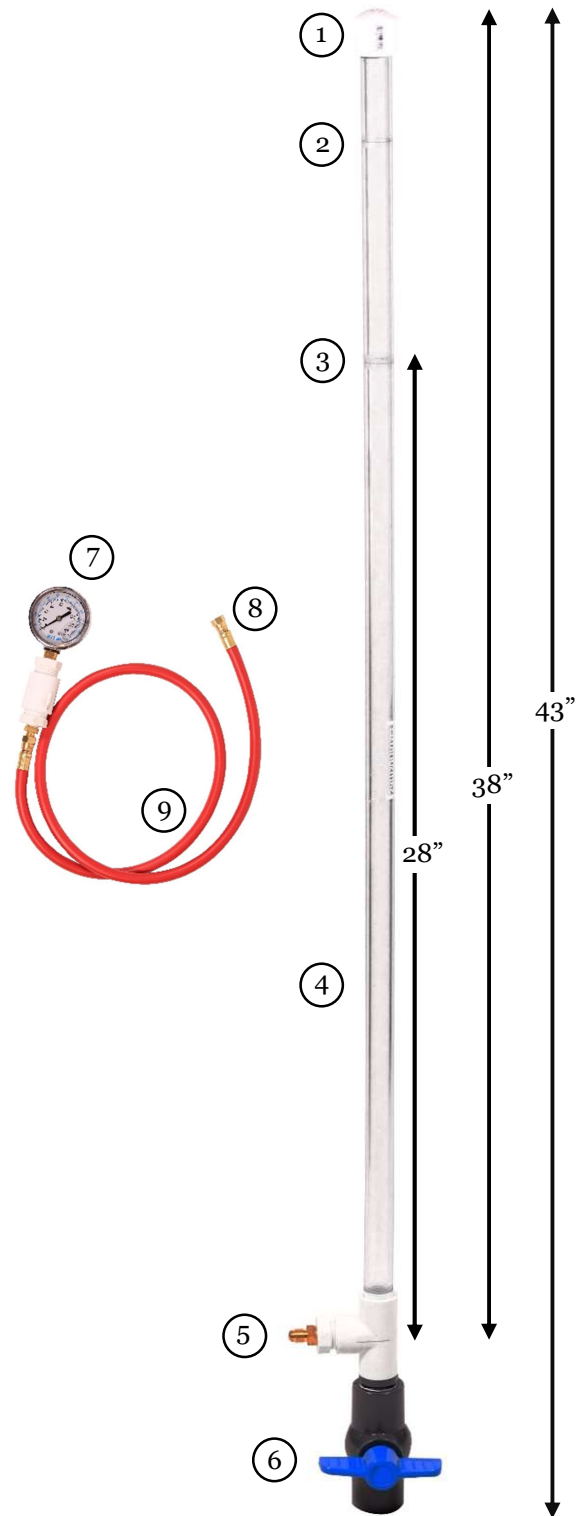
- Total Length: 43"
- Working Clearance: 38"
- Tubing: shatter-proof ultra-clear polycarbonate

Components

| No. | Description |
|--------------------------|------------------------------------|
| 1 | Vented End Cap |
| 2 | 34" Marker |
| 3 | 28" Marker |
| 4 | Site Tube |
| 5 | 1/4" Brass SAE Flare Fitting Inlet |
| 6 | SCH 80 Ball Valve |
| <i>Optional with Kit</i> | |
| 7 | 160 PSI 1/4" Pressure Gauge |
| 8 | 1/4" female swivel coupling |
| 9 | 4-foot 1/4" hose |

Initial Assembly

This product ships with the Site Tube (4) separate from the flair fitting and ball valve assembly (5 & 6). The Site Tube threads will come pre-wrapped in thread-seal tape. **IMPORTANT:** thread-seal tape must be used on the threads of the Site Tube or else the fitting threads will be stripped. Thread the Site Tube carefully into the white PVC tee (5), until hand-tight. Once assembled, the Site Tube assembly should not be disassembled.



Instructions

Backflow Test Site Tube

SamsonRiser™

Operations

The SamsonRiser Backflow Test Site Tube can be used to quickly test all brands of most backflow prevention assemblies, including: double check valve assembly, double check valve detector assembly, pressure vacuum breakers, spill-resistant pressure vacuum breakers, and single check valve assembly for fire.

This assembly is designed for use according to the American Water Works Association (AWWA) Site Tube test procedures. Although a 3/4" diameter site tube is "recommended", this 1/2" site tube was chosen for its light weight convenience and the results of the test are not affected.

Please refer to the AWWA for Testing Procedures

- Use a hose, optionally included in kit, to connect the Test Cock to the Site Tube Assembly (*Figure 1*).
- Fill the Site Tube up to the 28" or 34" marker, as prescribed by the intended test
- Hold the Site Tube assembly with the dashed inlet line level with the opening of the Test Cock or centerline of the Valve, whichever is higher. Carry out the testing procedure (*Figure 2*).
 - NOTE: the hose connection to the assembly allows the Site Tube to be repositioned so that the test may be done when the space immediately above the Test Cock is restricted. However, once repositioned, the inlet line must still be level with the Test Cock opening.
- Once test is complete, use the ball valve to conveniently drain water in the site tube into a bucket or drain (*Figure 3*).
- Use the hose and gauge, optionally included in kit, to test the Static Line Pressure (*Figure 4*).

Maintenance

The SamsonRiser Backflow Test Site Tube is designed to be a low maintenance and robust tool that will not be damaged by sand or sediment, and will not cloud overtime. If water spots or mineral deposits develop, the assembly may be washed with a non-abrasive detergent or vinegar solution and wiped down with a soft cotton or microfiber cloth.



Figure 1: Connect Site Tube to Test Cock



Figure 2: Observing water level in Site Tube during test while holding at correct height

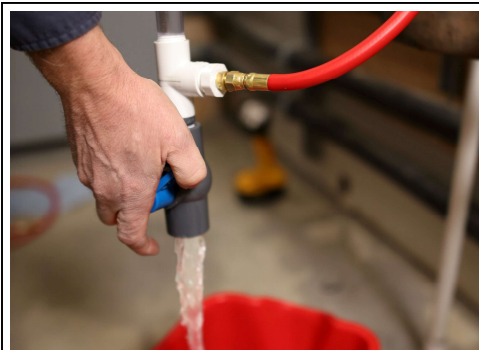


Figure 3: Draining water in Site Tube



Figure 4: Testing static line pressure

Instructions

Backflow Test Site Tube



Two (2) Year Limited Warranty

SamsonRiser warrants each new *Backflow Test Site Tube* of our own manufacture to be free from defects in material and workmanship, under normal use and service for a period of TWO (2) years from the date of original retail purchase.

Subject to the conditions and limitations described below, this product, if returned to SamsonRiser with proof of purchase within the stated warranty period and if covered under this warranty, will be repaired or replaced (with the same model, or one of equal value or specification), at our option. SamsonRiser will bear the cost of any repair or replacement and any costs of labour relating thereto. SamsonRiser will be responsible for the cost of shipping the repaired or replaced product to the Buyer within the United States or Canada.

This Warranty is subject to the following conditions and limitations:

- a) A bill of sale verifying the purchase and the purchase date must be provided;
- b) A written authorization is first obtained from SamsonRiser prior to the return of any parts;
- c) This warranty will not apply to any parts that are worn, broken or that have become inoperative due to abuse, misuse, accidental damage, neglect, or lack of proper assembly, installation, operation, or maintenance (as outlined in the instruction manual);
- d) This warranty will not apply to normal wear and tear, or buildup, or to expendable parts that may be supplied with the product and that are expected to become inoperative or unusable after a reasonable period of use;
- e) This warranty will not apply to routine maintenance and consumable items, including, but not limited to, cleanings;
- f) This warranty will not apply where damage is caused by repairs or alterations made or attempted by those other than SamsonRiser;
- g) This warranty will not apply to any product that was sold to the Buyer as a reconditioned or refurbished product (unless specified otherwise in writing);
- h) This warranty will not apply to any part if it has been damaged by, or its performance negatively affected by, any part supplied from anywhere other than SamsonRiser, including DIY shafts;
- i) This warranty will not apply to component parts sold by and identified as the product of another company, which shall be covered under that product manufacturer's warranty, if any.

Additional Limitations

This warranty applies only to the original purchaser, and cannot be transferred. This warranty and any possible liability of SamsonRiser hereunder is in lieu of all other warranties, express, implied, or statutory, including, but not limited to, any warranties of merchantability or fitness for a particular purpose. No person is authorized to give any other Warranty, or to assume any additional obligation on SamsonRiser's behalf unless made in writing, and signed by an officer of SamsonRiser.

Neither the retailer nor the manufacturer shall be liable for any other expense, loss or damage, including, without limitation, but not limited to any indirect, incidental, consequential or exemplary damages arising in connection with the sale, use or inability to use this product. The parties agree that the Buyer's sole and exclusive against SamsonRiser, whether in contract or arising out of warranties, representations, instructions, or defects shall be for the replacement or repair of defective parts as provided herein. In no event shall SamsonRiser's liability exceed the purchase price of the product.

Notice to Buyer

This warranty gives you specific legal rights, and you may have other rights, which may vary from location to location. The provisions contained in this warranty are not intended to limit, modify, take away from, disclaim or exclude any statutory warranties set forth in any applicable legislation.

SamsonRiser
contactus@samsonriser.com